



# BIG CITY MOUNTAINEERS

# 2018 ANNUAL REPORT





# Staff, Board, & National Council Members

## BCM BOARD

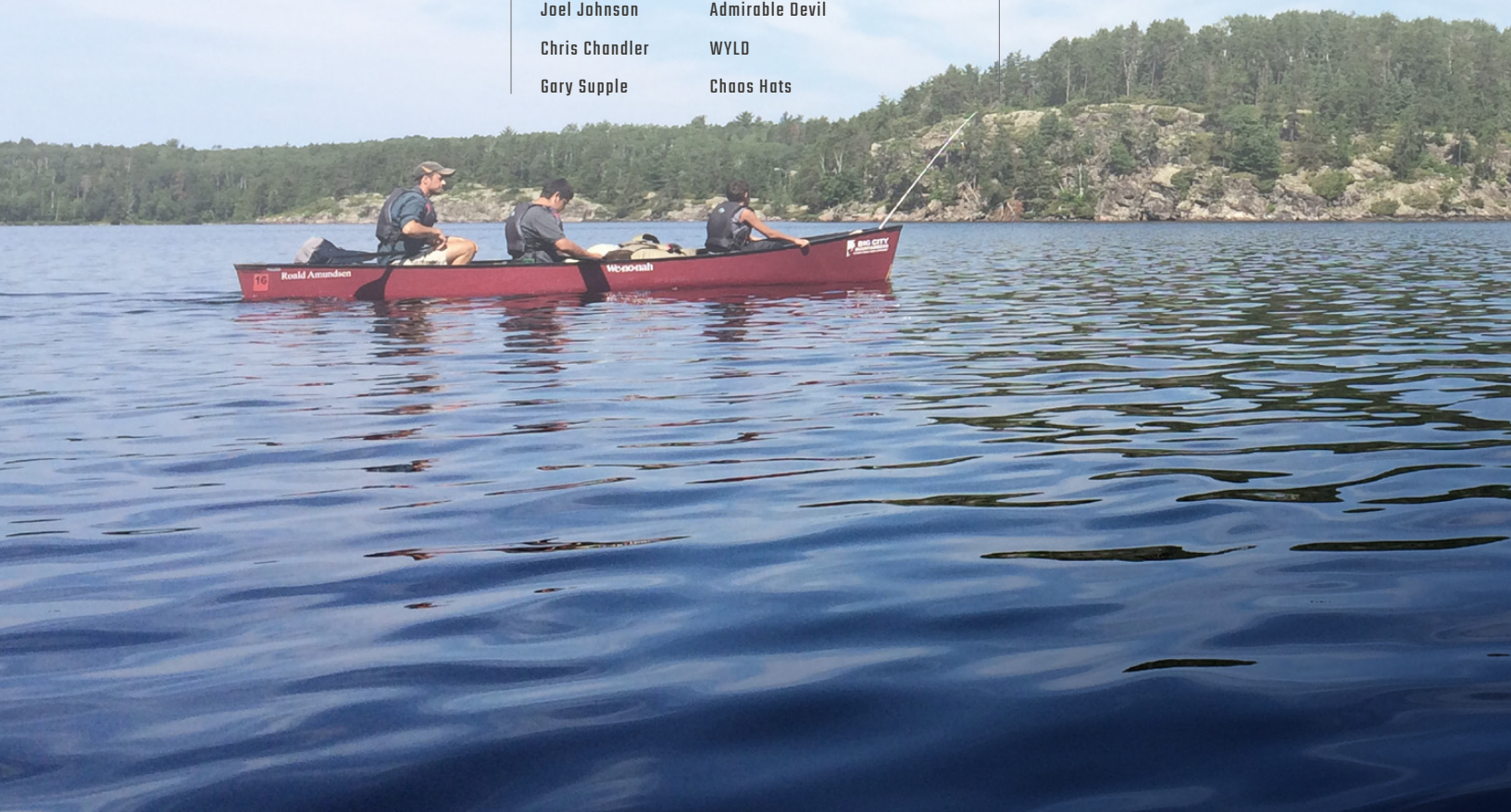
Kevin Hackett	Samsonite
Natalie Bybee	Natalie Bybee Coaching
Andrew LeCuyer	Dish Network
Ben Gipson	DLA Piper
Jay Steere	VF Corporation
Jeff Weidman	Retired Outdoor Retail Executive
Darren Josey	Polartec
Brian Jacobsen	Red Wing Shoes
Karen Francis	University of San Francisco
Paul Thompson	Hiebing
Reyna Alishio	Integer Group
Rachel Worth	K&L Gates LLP
Drew Kern	EWM Realty international
Amy Fox	Oculus VR
Carly Huey	Patagonia
Karma Giulianelli	Bartlit Beck Herman Palenchar & Scott LLP
Christian Weaver	National Congress of American Indians

## NATIONAL COUNCIL

Matt Kaplan	Outdoor Industry Association
Justin Welsh	Matisia Consultants
Jason Hanold	Hanold and Associates
Michelle Fleming	Stanley, PMI
Justus Hyatt	Therm A Rest
Jeff Labonte	JanSport
Porter Draper	Charles Schwab
Gary Griffin	Travelers
Roberta Garrison	Boeing (ret.)
Paul Andrews and Ciel Lawrence	EverWest
Cassie Heppner	Timberland
Deborah Beggan	Waypoint Outdoor/Helly Hansen
Chris Ball	Cushman Wakefield
Beth Cochran	What's UP PR
Nathan Ballard	Keegan & Coppin Co, Inc.
Scott Schreiber	XL Construction
Mitsu Iwasaki	Experiential Educator, Nonprofit Executive
Joel Johnson	Admirable Devil
Chris Chandler	WYLD
Gary Supple	Chaos Hats

## BCM STAFF

Megan Aranow	Summit for Someone Manager
Mira Barney	National Program Coordinator
Fred Sprout	Minnesota Program Manager
Lance Tsosie	Colorado Program Manager
Dana Matsunami	Colorado Camp Manager
Anne Hayward	Pacific Northwest Program Manager
Dan Hernandez	California Program Manager
Kandace Soiland	Director of Finance
Amanda Jameson	Donor Relations Manager
Doug Sandak	Corporate Relations Director
Bryan Martin	Executive Director
Jason Yale	National Program Director



Research is showing that experiences in nature reduce stress, improve us physiologically, lead to better education outcomes, and build civic mindedness.

## LETTER FROM BRYAN - EXECUTIVE DIRECTOR

Our community has heard all the stats before – “people spend 90% of their time indoors”; “the average American boy or girl spends as few as 30 minutes playing outdoors each day, and more than seven hours each day in front of an electronic screen”; “childhood obesity rates have more than doubled the last 20 years”; “pediatric prescriptions for antidepressants are rising precipitously.”

To be sure, there are a lot of inputs to a young person’s life that affect their physical, mental, and spiritual health. For us, we know that a part of the solution is to create for them a closer connection to the natural world. We have known intuitively for decades that nature and experiences in nature have tangible benefits to human existence. Now, increasingly, research is showing that experiences in nature reduce stress, improve us physiologically, lead to better education outcomes, and build civic mindedness.

Unfortunately, we also know that not every young person has the same opportunity to enjoy the outdoors and is able to take in all the benefits of being connected to nature in an equitable way. For 30 years, this is where BCM has stepped in. Our model removes material and social barriers to participation in outdoor activities. We outfit our students from head to toe to ensure they’re warm, dry, and safe. In addition, we provide a community of peers to have these experiences with and we surround them with caring adult mentors to provide support and encouragement.

Are we perfect or alone in doing what we do? Absolutely not. Is there room for improvement? Of course! Is going on a hike a panacea for all the challenges marginalized communities face? No. But our program has been proven effective at positively impacting the mental and physical well-being of our

students every year – both analytically and anecdotally – now totaling over 10,000 students and over 45,000 nights out under the stars.



Our 30th field season gives us an opportunity to reflect on decades of success. We also remember those who helped us get here and the lessons we learned, sometimes thriving and sometimes surviving, as a nonprofit organization. We also recognize with humility that we need to evolve as an organization in order to more effectively achieve our mission. What got us here won’t get us there. We must strive for increased cultural relevance in the communities we serve, and challenge ourselves to have difficult conversations about power, privilege, justice, equity, and inclusion.

As we get ready to embark on another great season changing the life trajectory of youth, I know our work is as important today as it was when Jim Kern led our first trip in 1989, but we won’t rest on our laurels. We’re going to wake up tomorrow, next month, and next year, knowing that we are very fortunate to do what we do. We know there are so many kids out there that need our support and the unique experiences BCM offers. To be sure, many kids have more reasons today (real and perceived) to be worried and seek healing than ever before. So, in the years ahead, we will remember why we’re here and continue to stay trained on being relevant to the communities we’re in, support the students we engage, and work hard each day to advance Big City Mountaineers – this organization we all care so much about.

*Bryan Kern*



# Mission, Vision, Values

## Mission

Big City Mountaineers instills critical life skills in under-resourced youth through transformative wilderness mentoring experiences.

## Vision

A nation transformed by youth connected to and empowered by nature.

## Values

**Youth** – We believe in, and have respect for, youth.

**Nature** – Experiences in nature involve challenge and opportunity for growth. To experience nature is to unlock the potential within oneself.

**Community** – We are constantly striving for more inclusive and connected communities.

**Collaboration** – Partnership coaxes fresh perspectives and promotes creative problem solving, enabling us all to succeed.

**Accountability** – Transparency builds trust. Through a culture of communication, we hold ourselves to the highest standards of safety, stewardship of resources, and program delivery.





# Financials

	2018	2017	2016
<b>ASSETS</b>			
Cash and Cash Equivalents	466,939	313,540	117,717
Investments	19,434	9,941	54,447
Contributions and Grants Receivable	190,444	176,692	87,326
Prepaid Expenses and Other	4,970	3,170	13,580
Inventory	309,281	267,636	263,150
Property and Equipment, Net	115,984	119,225	216,882
Investments- Endowment	92,004	103,091	98,147
<b>Total Assets</b>	<b>\$1,199,056</b>	<b>\$993,295</b>	<b>\$851,249</b>
<b>LIABILITIES AND NET ASSETS</b>			
LIABILITIES	66,404	50,041	21,626
NET ASSETS			
Undesignated	596,607	394,076	237,798
Investment in Property and Equipment	115,984	119,225	216,882
Temporarily Restricted	320,061	329,953	274,943
Permanently Restricted	100,000	100,000	100,000
<b>Total Net Assets</b>	<b>\$1,132,652</b>	<b>\$943,254</b>	<b>\$829,623</b>
<b>Total Liabilities and Net Assets</b>	<b>\$1,199,056</b>	<b>\$993,295</b>	<b>\$851,249</b>
<b>SUMMARY OF REVENUE AND EXPENSES</b>			
<b>PROGRAM</b>			
Contributions and Grants	956,031	784,695	695,726
Government Grants	22,142	0	0
Program Income	26,420	25,388	38,380
In-Kind Support	338,963	397,362	72,066
Other Income	(11,522)	99,932	7,458
<b>Total Program</b>	<b>\$1,332,034</b>	<b>\$1,307,377</b>	<b>\$813,630</b>
<b>SUMMIT FOR SOMEONE</b>			
Contributions	242,441	266,110	177,918
In-Kind Support	172,245	177,434	137,237
<b>Total Summit for Someone</b>	<b>\$414,686</b>	<b>\$443,544</b>	<b>\$315,155</b>
<b>EXPENSES</b>			
Program Services	992,821	1,080,144	587,699
General and Administrative	79,058	91,928	77,404
Fundraising Expenses	128,624	132,307	151,924
Summit for Someone	356,819	332,911	289,596
<b>Total Expenses</b>	<b>\$1,557,322</b>	<b>\$1,637,290</b>	<b>\$1,106,623</b>
<b>Change in Net Assets</b>	<b>\$189,398</b>	<b>\$113,631</b>	<b>\$22,162</b>



# 2018 Organizational Successes

Our goals each year move us to develop more impactful programming, increase our relevance, and to sustainably grow our organization. We strive for a stronger presence in the cities where we operate and to be an instrumental servant leader to our partners. To these ends, BCM is proudest of the following accomplishments.

## GREAT PROGRAMS

**54** WEEK-LONG EXPEDITIONS  
AND OVERNIGHT CAMPS



**846**  
YOUTH  
ENGAGED



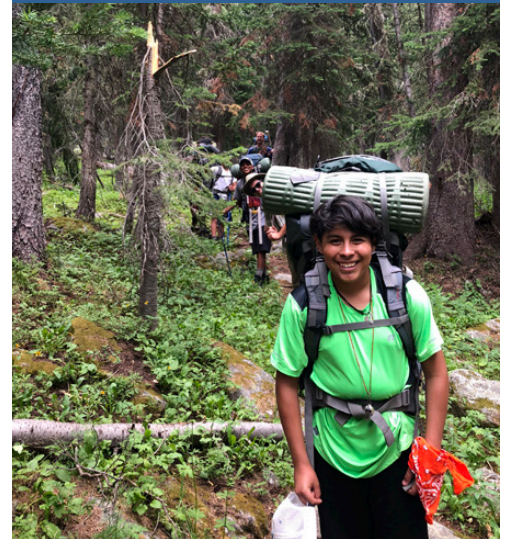
**19,800** VOLUNTEER  
MENTOR HOURS



**1,570** NIGHTS UNDER  
THE STARS



**2,677** YOUTH PROGRAM  
DAYS





**STRONG PARTNERSHIPS**

**30** YOUTH AGENCY PARTNERS



**LASTING SUPPORT**

BCM is rated **GOLD** for fiscal transparency and financial stewardship by **GuideStar**



**100+** CORPORATE SPONSORS



**21%** YEAR OVER YEAR PROGRAM GROWTH

**PARTICIPATION IN 3 NATIONAL COALITIONS**

**150+** CLIMBERS RAISED **\$260,000+**



**92%** "IN PRACTICE" RATING BY THE NATIONAL QUALITY MENTORING SYSTEM



**27%** Increase in Cash Donations Overall

**\$511,000+** In-Kind Product and Professional Services Secured









# People

Our trips provide youth with an opportunity to grow, to heal, and to experience a sense of place. Vital to these experiences is the role our volunteer mentors, trip instructors, and staff play in ensuring each trip or camp is safe (physically and emotionally), impactful, and fun. These caring adults and committed professionals put in thousands of hours every year to prepare themselves and execute each trip in the field. They are the heartbeat of Big City Mountaineers.

---

**23 Professional  
Trip Instructors  
Worked 5,300  
Hours**

---

---

**106 Volunteers  
Mentors Recruited  
Contributing 14,024  
Hours Valued at  
\$356,630**

---





# Partnerships

BCM partners with community-based youth development agencies, recreation centers, and schools to identify youth that would benefit most from a BCM experience. This way, the program reaches kids that would not otherwise connect with or have access to camps and outdoor activities. Moreover, the collaborative relationships help us create curriculum, prepare students for the experience, and ensure learning is transferred after the trip is over.





---

**100 Youth Agency Leaders  
Participated on BCM Expeditions,  
Camps, and Single-day Activities**

---

---

**120 Site Visits,  
Collaboration  
Session, Family  
Nights, or Reunions  
Conducted**

---





# Places

BCM's backpacking trips, paddling expeditions, and camps are grounded in time-tested outdoor experiential education theory and practice. Beyond the lessons in outdoor skills, natural history, communication, teamwork, and leadership that are part of any wilderness expedition, there is an underlying process through which the experience is rendered meaningful in the lives of the participants.

**PERMITTED OUTFITTER OF  
THE US FOREST SERVICE IN  
12 WILDERNESS AREAS**



**Boundary Waters Wilderness  
Canoe Area (MN)**

**Flat Tops Wilderness Area (CO)**

**Raggeds Wilderness Area (CO)**

**Holy Cross Wilderness Area (CO)**

**The Medicine Bow Mountains (CO)**

**Mount Monadnock (NH)**

**Glacier Peak Wilderness (WA)**

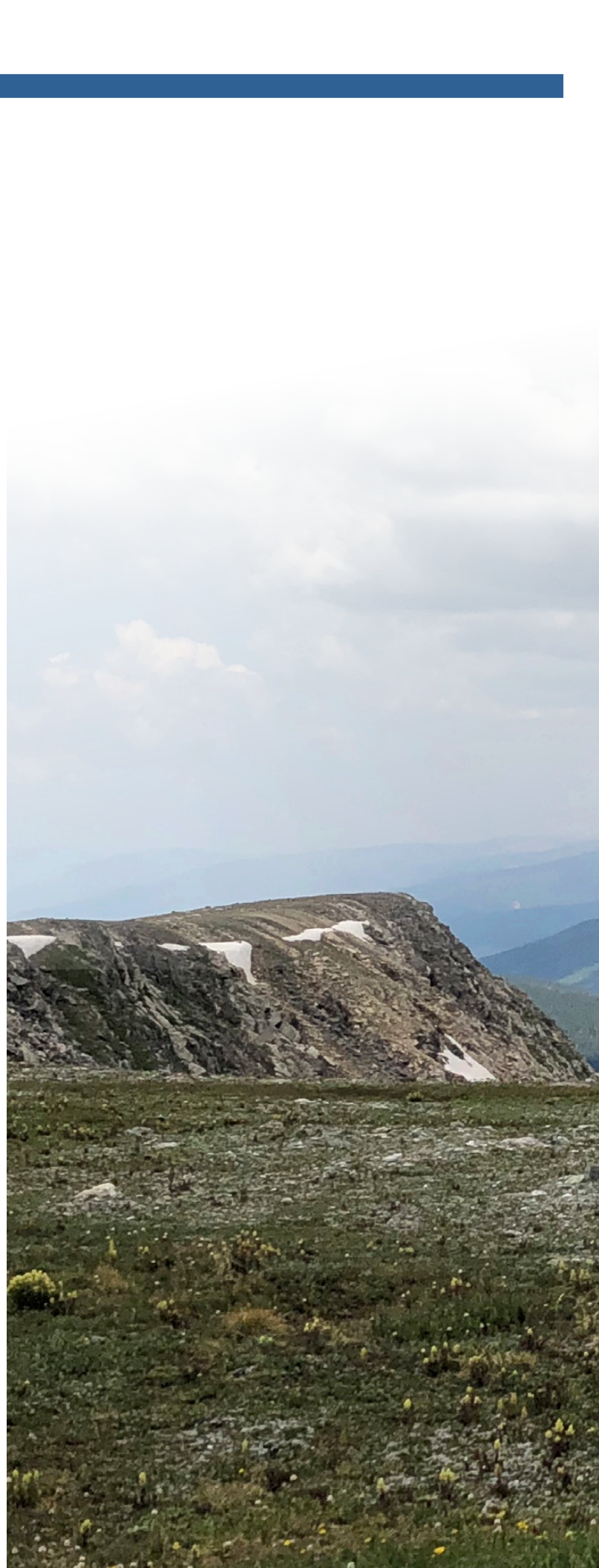
**Bull of the Woods Wilderness (WA)**

**Mt Adams Wilderness (WA)**

**Mt Hood Wilderness (OR)**

**Emigrant Wilderness (CA)**

**Ansel Adams Wilderness (CA)**









# BCM Early Days

by Jim Kern

In the spring of 1989, I wanted to take my son, Drew backpacking in the west. At the time, Continental Airlines was offering a deal—buy one adult ticket to a western city and receive a child's ticket for \$1! I thought it would be great to have Drew bring a friend along, so I convinced my colleague Gerry to buy into the deal with me. We were heading to Missoula, Montana, for an adventure in the Northern Rockies and we had two \$1 tickets for the kids.

This is when fate intervened. Many of Drew's friends either weren't interested or couldn't make it. Not wanting to let a perfectly good plane ticket go to waste, I phoned an organization I had volunteered for in the past—Teenage Shelter Care in downtown Miami. I asked the director if she knew of a deserving boy there who would love such a trip and who could get his parent's approval. In a few days, she called me back to say she had the perfect candidate—a 14-year-old named Raymond.

Gerry, Drew, and I pieced Raymond's gear together and in a few short weeks our departure date had arrived. We were flying to Montana for a week of hiking and camping. We had a fantastic time at Glacier National Park and exploring the Bitterroot Mountains over the course of the week. We visited alpine lakes, saw wildlife, took pictures on the Continental Divide, and explored mountain towns. Everyone agreed that it was an unforgettable adventure.





## This is when fate intervened.

No sooner was I back in Miami, then the idea for Big City Mountaineers began to take shape. I envisioned a series of summer trips for five (or so) deserving youth, an equal number of adults who would serve as volunteers. I refined it as follows: a day of travel out, an orientation day, two days to a mountain lake,

life lessons and hanging out at the lake, two days hiking back, and a day to return home—an eight-day trip.

The next summer, I couldn't find any appropriate groups that would take me up on my offer. Luckily, my son Jim connected with a chapter of Youth for Christ. We tested the program successfully with a five-day hike in the Anaconda Pintler Wilderness. It was 1990. We were on our way.

The following year, we ran three trips. The next year, five. The year after, seven. The program was building but our success was threatening to financially sink the few of us volunteering to put these plans into action. We desperately needed funds to keep up with demand. We needed to professionalize with a paid executive director—someone who could set budgets, organize the volunteer leaders, and coordinate with the youth agencies.

That's when JanSport expressed an interest in helping. I visited Appleton, Wisconsin, to speak with Skip Yowell (JanSport's Founder), President Paul Delorey, and other executives about the program. When the meeting concluded, they asked me how much I needed. I told them we need \$75,000 to get the organization off the ground. They suggested \$100,000. The rest is history. BCM now has a budget of over \$1 million and has served over 10,000 students through their trips and camps. I am so proud of what it has become.





# Our Strategic Direction

BCM has seen exciting times of transition and growth over the past three years.

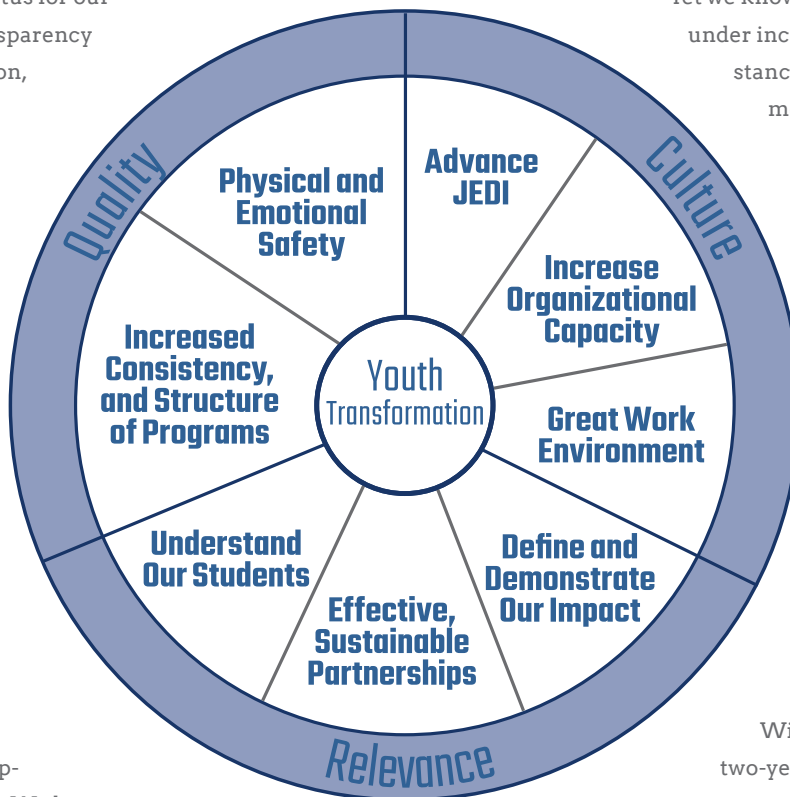
We are heartened by the overall direction of Big City Mountaineers. We are growing stronger as a nonprofit organization.

We have earned GuideStar Gold Status for our commitment to organizational transparency and financial stewardship. In addition, we achieved accreditation from the National Mentoring Partnership for adherence to the Elements of Effective Practice for Mentoring. The elements are research-informed standards for creating and sustaining quality youth mentoring programs.

We have achieved many important successes and milestones in recent years.

We surpassed 10,000 students engaged. BCM participants have spent over 45,000 nights under the stars. We have expanded our program offerings to include more overnight camps and single-day activities. We are piloting leadership-development programs for students. We have improved our strategic communications and have built a fantastic website that tells our story. Importantly, we have established many valuable operational systems and we have grown our board and national council.

Lastly, we are in awe of the contributions from our volunteers, SFS participants, donors, corporate sponsors, and foundation supporters. Without them, we would not be able to provide the transformative outdoor experiences we all know are so important for our students' long-term health and well-being.



In turn, we continue to run excellent programs for our students in Denver, San Francisco, Portland, Boston, Minneapolis, Miami, and Seattle. This field season marks Big City Mountaineers' 30th anniversary. And it's our biggest season yet! We will run 40 expeditions, 20 overnight camps, and dozens of single-day hikes and educational workshops. All told, we will work with over 1,000 youth. Each field season confirms for us that the work we do is impactful, valuable, and worthy of continued investment.

Yet we know we have much more work to do under increasingly challenging circumstances. Fewer youth are connecting meaningfully to the outdoors, unfair and systemic barriers to participation still exist, and other "hot button" issues of the day pull peoples' time and attention away from our mission. In a resource—thin and competitive environment, relevance is key. We must constantly strive for increased relevance in our work with students, in our partnerships with youth agencies, and in our impact within communities.

With this in mind, we present this two-year strategic plan to build on our successes and align our work around our mission, vision, and values. Specifically, we have identified three overarching strategic goals that will guide our work based on Quality, Culture, and Relevance. We believe these strategic goals, and the initiatives that flow from them, will make Big City Mountaineers an essential service provider and partner for our youth agencies. Moreover, the plan will establish BCM more concretely in the cities where we operate. Finally, we believe it will authentically connect us to community leaders, businesses, policy-makers, and the public at-large for the work we do and the impact we have.



## Our Strategic Goals

1. Quality – Provide youth with impactful outdoor experiences that intentionally teach, reveal, or enhance critical life skills.
2. Culture – Build an organizational culture that fosters trust and togetherness; and embraces JEDI (Justice, Equity, Diversity, and Inclusion) in all aspects of our work.
3. Relevance – Build stronger relationships with our partners and the communities that we serve.

### Quality

#### *We will be successful if we can:*

- Improve preparation before and transference after, our expeditions with our youth agency partners.
- Improve the delivery and effectiveness of our curriculum in the field.
- Deepen our engagement with students throughout the year and support their personal and professional development.
- Improve our ability to prevent and respond to mental health crises.
- Improve our ability to manage risk and ensure the safety of all our participants.

### Culture

#### *We will be successful if we can:*

- Improve our cultural competence and cultural humility in all aspects of our work.
- Increase our understanding of justice, equity, diversity, and inclusion.
- Increase our organizational capacity.
- Ensure the adoption of best practices in governance, including maximizing the effectiveness of our board committees and advisory council.
- Offer more professional development opportunities for staff.
- Establish more systems to collect feedback up and the down the organizational hierarchy.

### Relevance

#### *We will be successful if we can:*

- Improve our on-the-ground connection to the communities that we serve.
- More rigorously determine what our students and their families need and want from BCM.
- Improve our year-round communication and strengthen relationships with our youth agency partners.
- Improve our ability to evaluate all aspects of our program.
- More effectively communicate our point of difference to the public.





# Corporate Support

Big City Mountaineers grew its support from corporate partners by 26% in 2018. We rely on strong support from our outdoor-industry partners to sustain us and provide us with much needed technical product. A first-time experience in the backcountry can be daunting. Providing our students with high-quality gear and apparel ensures that they will have a safe, warm, dry, and enjoyable time outdoors.

\$50,000 +

BACKPACKER  
BY OUTDOOR  
Hiebing



\$25,000 +



BACKBONE  
MEDIA

SAS  
QUA  
TCH



MERRELL

Eddie Bauer EST. 1920

\$15,000 +

STANLEY  
A BRAND OF PMI

Smartwool



Columbia



Zappos  
v.com  
POWERED BY SERVICE

ARCTERYX

SOLE



Timberland

\$10,000 +



THERMAREST



LEO A DALY

\$5,000 +



Crowe

GARMIN



PRIMUS

LOWA  
100% HANDCRAFTED IN EUROPE



BOGS



Terramar  
BASE LAYER

CLIF

adidas TERREX



OPTIC NERVE



## LESS THAN \$5,000

Riverview Systems Group, Inc.

Engagement

REI Co-op

Tewell Warren Printing

Chaos

Adventure Medical Kits

AHB Media

Industrial Revolution

Stay Involved, Inc. DBA

BNI Miami-Dade, Inc.

Eagles Nest Outfitters

Sherpa Adventure Gear

Elevation Outdoors

Deuter

Drawn Out West

Pro Ski and Mountain Service

City National Bank of Florida

Three Saints Outdoor

Salewa

Wonderful Giving

Mountainsmith

Kohl's

MtnStuff

Nite Ize, Inc.

Evolucion Innovations

Sufferfest Beer Company

DaKine

SOG Knives

4Syte Consultants

Mountain Fitness Research, Inc.

Vibram USA

CoBank

Google Inc

GCI Outdoor

Microsoft Matching Gifts Program

Sea to Summit

Banesco

Benjamin Douglas Consulting

Fembi Mortgage

Granite Gear

Highlands Behavioral Health

Law Offices of Alex Sirulnik

Mercedes-Benz of Coral Gables

Mountain Time Soap Shop

Southland Industries

TD Gulfstream Partners, LLC

VMware

Sweetwood Jerky Co.

Outdoor Project

First Unitarian Society of Denver

GSI Outdoors

Head Spin Outdoors

Champion Power Equipment

Medtronic Foundation

Volunteer Grant Program

Kinco International

Miir

2050 Partners

GIN Doctors Fundraiser

Unify Consulting

Sage

Acemon Corp. DBA Visiting Angels

Allied Feather and Down

Amer Sports Winter & Outdoor

C-Suite Miami, Inc.

Debowsky Design Group P.A.

Denver Broncos Community

Development - Stadium Management Co

Eastwoods Apparel Company

Fisher and Baker

Goede, Adamczyk, DeBoest & Cross PLLC

Millenium Pharmaceuticals

Matching Gift Program

RKL Wealth Management LLC

The Law Office of Matthew E. Ladd

Travel Country Outfitters

Bivouac Coffee

Sierra Nevada Brewing Co.

The Integer Group

Gear Junkie

## 100 \$1,000+ CORPORATE SPONSORS



## \$511,000+ IN-KIND PROFESSIONAL SERVICES AND TECHNICAL PRODUCT

## 10 Cause-Related Marketing Campaigns





# Summit for Someone

Summit for Someone has been synonymous with Big City Mountaineers for over a decade. Every year, participants climb, hike, bike, run, and paddle to support BCM's youth programming. When someone registers for a Summit for Someone climb, runs in Ragnar race, or chooses their own custom adventure, they are joining a community of outdoor enthusiasts who not only love taking on personal adventures, but feel a desire to help provide access to opportunities in the outdoors for the next generation.

**2,355** UNIQUE DONATIONS  
TO SFS PARTICIPANTS



## 10 Amazing Mountain Guide Partners





## SFS CLIMBER LIST

*Rachel Gillette*  
*Lauren Marks*  
*Scott Thorsteinson*  
*Stasia Honnold*  
*Chris Ridings*  
*John Vassallo*  
*Andrew Bidwell*  
*Amelia Tabullo*  
*Adam Marks*  
*Adam Dippold*  
*Dennis Lewon*  
*Utpal Dighe*  
*Molly Daley*  
*Colleen Lane*  
*Johnny Jesson*  
*Jenna Tepavceвич*  
*Phoebe Novitsky*  
*Kristy Thorsteinson*  
*James Charles*  
*Rena Vasquez*  
*Michael Souza*  
*Del Brown*  
*Alan Goggins*  
*Ryan LaPlante*  
*Kevin Lyons*  
*Kayla Seaforth*  
*Andrew Edstrom*  
*Steve Yocom*  
*Brittany DeKoch*  
*Peter Pontano*  
*Janel Martinez*  
*Heyward Smith*  
*Steven Reinhold*  
*Sean Estep*  
*Schyler Drain*  
*Robert Winslow*  
*Meg Atteberry*  
*Travis Lewallen*  
*Michael Gutierrez*  
*Matthew Marrapode*  
*Brittany Bigley*  
*Rebecca McCormick*

## In 2018, over 150 climbers raised over \$260,000+ for BCM Programs.

*Bob Czaplicki*  
*Robby Vaughn*  
*Damon Yeh*  
*Keegan Hasbrook*  
*Megan Aranow*  
*Joelle Hamm*  
*Sara McCormick*  
*Adrienne Bryant*  
*Tom Goltz*  
*Coy Neeley*  
*Christine Kolowith*  
*Mike Gestwick*  
*Dena Roberts*  
*Robert Berman*  
*Seth Coakley*  
*Keith Erps*  
*David Traffie*  
*Alissa Traffie*  
*Arturo Cervantes*  
*Brenda Perez*  
*Justin Nyberg*  
*Bryan Martin*  
*Naomi Jozovich*  
*John Queen*  
*Greer Van Dyck*  
*Erin Horn*  
*Carl Johnson*  
*Ben Clark*  
*Justus Hyatt*  
*Alexis Chasney*  
*April Burton*  
*Stacie Steel*  
*Dawn Zeleznik*  
*Bex Sakarias*

*Michael Weber*  
*Mary Robbins*  
*Valerie Frey*  
*Amanda McMahon*  
*Larry McMahon*  
*Jennifer Goulee*  
*Hannah Bern*  
*Bryan Lisowski*  
*Sarah Pollack*  
*Andreas Nickhorn*  
*Zach Haller*





# Individual Donors

We are genuinely humbled and inspired by our individual donors' generosity. We are thankful to have a community of supporters who care deeply about ensuring that everyone – regardless of their background – has access to experiences in nature, and the personal growth those can inspire. Thank you for choosing Big City Mountaineers and turning your energy and passion into opportunities for the next generation!

*Rocky & Laura Henderson*

*Brad & Melissa McQueen*

*Jeff Hester*

*Jeff & Judy Weidman*

*Claudine Claus*

*Jonathan Meyerholz*

*Mitch Campbell*

*Paul Andrews & Ciel Lawrence*

*Stuart & Leah Durkheimer*

*Annika Berridge*

*Cheryl Blevins*

*Carolyn Champion*

*Brian Jacobson*

*Ben Gipson & Olivia Cao*

*Robyn Garrison*

*Scott Thorsteinson*

*Andrew Oliveira*

*Jeffrey Bennis & Ruth Rifkin  
Bennis*

*Kelly & Mark Kraus*

*Heather Giannandrea*

*Robert Winslow*

*Bill & Mary Kay Stoehr*

*Jose Martinez*

*Christine Kolowith*

*Matthew Texler & Natalie Bybee*

*Colleen Lane*

*Lauren Marks*

*Kayla Seaforth*

*Schylar Drain*

*Joelle Hamm*

*Justin Welsh*

*Michael Gebhardt*

*Perry M. Adair*

*Charles Floria*

*Amy Norris*

*Tom Helbig*

*Ann Daw*

*Chris & Cara Chandler*

*Gregg & Julie Hosfeldt*

*Todd Roberts*

*Jordan Buttorff*

*Yvonne Rivera*

*Travis Lewallen*

*Ryan LaPlante*

*Brian Barakat*

*Dennis Lewon*

*Anne Wild*

*Adam Dippold*

*Andrew LeCuyer*

*Mark Beezley*

*Doug & Donna Fish*

*John & Cindy Haugen*

*Meera Patel*

*Alice Hackney*

*Benjamin Corrie*

*Johnathan & Ashley Clark*

*David Weisberg*

*Eric & Susan Wiseman*

*Eric Tupler*

*John Graff*

*Kevin Hackett*

*Laura Choe*

*Morrie Trautman*

*Chris Ridings*

*Nathan & Katharine  
Knarreborg*

*Patrick & Christine Nolan*

*Steve Rendle & Family*

*Scott Schriefer*

*Steve Hill*

*Susan Foster*

*Hoby & Lynn Douglass*

*Thomas & Brooks Barron*

*Todd & Pam Spaletto*

*Katherine Homes*

*Ken Hebb*

*Steven Reinhold*

*Jenna Tepavcevic*

*Allen Spigelman*

*Johnny Jesson*

*Morten Gydesen*

*Sean Estep*

*Casey Cheshire*

*Andrew Edstrom*

*Charles Michael*

*Robert Czaplicki*

*Suzanne Lang Younge*

*Sean D Bradley*

*Adam Marks*

*Benjamin Gettinger*

*Hale Sostock*

*Reyna Alishio*

*Rachel Gillette*

*Ashley Fortenberry*

*Chad Bilstein*

*Christopher Neves*

*Hal Taylor*

*Paul Poirot*

*Rachel Worth*

*Colleen Charles*

*James Marks*

*Robert Vaughn*

*Alfred Boylan*

*Chris Smead*

*Daniel DesMarais*

*Kay Thornton*

*Kenneth Fish*

*Maryellen Maurer*

*Kristin Ogden*

*Amanda Tweed*

*Andrew Overhiser*

*Anna Frogge*

*April Burton*

*Arne Borgnes*

*Benjamin Pontano*

*Bill & Carol Sweasy*

*Brent & Ruth Clark Family*

*Drew & Stacey Kern*

*Edmund Geller*

*Gerald Kim*

*Jake Cummins*

*James Dlubac*

*Jeffrey Homer*

*Karma Giulianelli*

*Lauren Kest*

*Mac & Theresa Tillman*

*Michelle Humes*

*Miranda Boylan*

*Molly Baab*

*Patti Driscoll*

*Paul & Joyce Gundlach*

*The Paulsen Family*

*Rebecca Macias*

*Richard Nyberg*

*Robert Warren*

*Roy Notowitz*

*Sarah Conner-Brown*

*Sebastian & Tegan Corradino*

*Shirley Eigenbrot*

*Steve Souza*

*Jeremy & Kristal Taylor*

*Matt & Lacie Bullard*

*Brent & Ruth Clark*

*Doug & Lisa Ruecker*

*Thomas Smith*

*Tim Nelson*

*Timothy Mullin*

*Tom & Mila Tuttle Family*

*William Nigh*

*Winnie Kingsbury*

*Zachary Masino*

*The Schawbel Family*

*Brian Bass*

*Florence Sandok*

*Stacie Steel*

*Bill Sterling*

*David Volke*

*Andrew Martin*

*Garrick & Emily Raymond Becker*



Jay Lambert  
 Jennifer McLaren  
 Lacey Nakaguma  
 Michael Souza  
 Seth DeKanter  
 Michelle Hernandez  
 Miguel Mejia  
 Kettle & Spoke  
 Jonathan Norwood  
 Alyssa Neece  
 Rick & Joyce Nyberg  
 Katie Parker  
 Deborah Beggan  
 Michael Weber  
 Dena Roberts  
 Seth Coakley  
 Vickie Estep  
 Keith Jackson  
 Chip Ritter  
 Kristi Theis  
 Linda Kuhn  
 Peter Troiano  
 Theresa Dvorak  
 Timothy Brennan  
 Jennifer Goulee  
 Kate McCanna  
 Maura Robbins  
 Sarah Mallicote  
 Adam Lee  
 Barbara Friedland  
 Carolyn Hardee  
 Christopher Spuches &  
 Christina Porter  
 Emilee Hopkins  
 Eric Cole  
 Erin Scott  
 Gail Oliveira  
 George Carlsgaard  
 James Carlsgaard  
 Joanne Aldeborgh  
 John Butler  
 Michael & Marianne Simcic  
 Paul Bunce  
 Sam Newman  
 Trenton Mulch  
 The Binning Family  
 Gregory Manuel  
 Janel & Jose Louis Martinez  
 Shauna Fjeld  
 Adam Chojnacki  
 Robert Berman

Crystal Gatchel  
 Sabrina Abbott  
 Roger & Pat Van Zele  
 Alexander Henkels  
 Andrew Walton  
 Anne Cheshire  
 Daniel W Kim  
 Jeremy Davis  
 Lynn Mizner  
 R Anthony Malone  
 Sonali Dighe  
 Uma Dighe  
 Blake Lipham  
 Brandon Matson  
 Brendan Houghton  
 Daniel Urban  
 David Cerio  
 Ivan Millich  
 Jack Dearth  
 Jane Buxton  
 Jeff Clayton  
 John Schreck  
 Joseph Anscher  
 Joshua Patrick  
 Keith Lundquist  
 Ladd Smith  
 Nancy & John Spangler  
 Paul Cifelli  
 Richard Walker  
 Robert Watson  
 Tim & Julie Block  
 Tristan Boylan  
 Richard Herrera  
 Andrew Head  
 Darren Josey & Cara Hogan  
 Al & Elisabeth Brady  
 Anders Berggren  
 Andrew Markus  
 Andrew Pontano  
 Bernard J. Dobroski  
 Bradley Huff  
 Carly Huey  
 Cassie Clark  
 Christine Charron  
 Christopher Ball  
 Dan & Heidi Hurdle  
 Danny Carpenter  
 David Brisbin  
 David Curtis  
 David Keeler  
 David Taylor

Del Costy  
 Denise Minakowski  
 Edith Bidwell  
 Eric Raff  
 Eric Smith  
 Erich Krueck  
 The Galinger Family  
 Graeme Esarey  
 Gretchen McGill  
 H. Mark Wild & Gabriella Zadra  
 James Bowie  
 James Chin  
 Janis Kanter  
 Jared Shaner  
 John & Erin Telford  
 Jorie Kelly  
 Joseph Banas  
 Kristin Henderson Burris  
 Layne Mielke  
 Luke Kumanchik  
 Mar Sheff  
 Mayra Rojas & Carlos Mendez  
 Michelle Strowhiro  
 Pamela Smock  
 Peter & Laney Sachs  
 Sam Seppanen  
 Sheena Johnson  
 Stephen Leonard  
 Ted Fetterman  
 ThanhVan Tran  
 The Henrie Family  
 Tom & Tonya Clarke  
 Tom Goltz  
 Tristan MacDonald  
 Virginia Graves  
 William Boilore  
 The O'Neill Family  
 Kurt Hansen  
 Cassie Heppner  
 Amelia Tabullo  
 Deborah G Queen  
 Hugh Thomson  
 Douglas Schnitzspahn  
 Jeffrey Rubin  
 Benjamin Clark  
 Ethan Wood  
 Phillip Horwitz  
 Anita Rodgers  
 Janet Martinez  
 Liz Scully  
 Michael Baker

Robert Underwood  
 Thomas Turley  
 Abigail & Kenyon Cooke  
 Darren Kittleson  
 Jacqueline Abreu  
 John Parrott  
 Marcia Lidman  
 Phetsamorn Boupavong  
 Thomas Koistinen  
 Timothy Godfrey  
 Todd Hudgins  
 Travis Ramp  
 Victor Cao  
 Chris Blodgett  
 Katharine Liao  
 Susan Schuur  
 Jon Black  
 Anand & Kiren Annigeri  
 Anne Peterson  
 Curt Rocca  
 Daniel Gestwick  
 Denise Ashley  
 Doug & Janet Hahn  
 Elaine Lewon  
 Elizabeth Masterson  
 Gary Plotkin  
 George Headley  
 Katherine Gunneson  
 Larry W Papasan  
 Lisa Alexander  
 Michael Moynihan  
 Nancy Chan  
 Paul Chain  
 Peter Pontano  
 Phoebe Novitsky  
 Ray D Ratliff  
 Rebecca Lynn Smith  
 Robert Cohen  
 Ruth E. Ankenbauer  
 Scott Heneisen  
 Susan Ann Goulee  
 Tad McClurg  
 Ted Gillett  
 Tom Barriball  
 Wendy Yount  
 Josh & Jane Schultz





## SKIP YOWELL LEGACY CIRCLE

Outdoor-enthusiast and ambitious inventor Skip Yowell was the spark that started it all at BCM 20 years ago. The JanSport co-founder's \$100,000 donation on behalf of his company completely transformed our organization at a critical time in its development. In Skip's honor, donors can help fund BCM's future by joining the Skip Yowell Legacy Circle. Legacy Circle members donate \$20 or more per month or make an annual gift of \$1,000 or more.

*Rocky & Laura Henderson*  
*Brad & Melissa McQueen*  
*Jeff Hester*  
*Jeff & Judy Weidman*  
*Claudine Claus*  
*Jonathan Meyerholz*  
*Mitch Campbell*  
*Paul Andrews & Ciel Lawrence*  
*Stuart & Leah Durkheimer*  
*Annika Berridge*  
*Cheryl Blevins*  
*Carolyn Campion*  
*Brian Jacobson*  
*Ben Gipson & Olivia Cao*  
*Robyn Garrison*  
*Scott Thorsteinson*  
*Andrew Oliveira*  
*Jeffrey Bennis & Ruth Rifkin Bennis*  
*Kelly & Mark Kraus*  
*Heather Giannandrea*  
*Robert Winslow*  
*Bill & Mary Kay Stoehr*  
*Jose Martinez*  
*Christine Kolowitz*  
*Matthew Texler & Natalie Bybee*  
*Colleen Lane*  
*Lauren Marks*  
*Kayla Seaforth*  
*Schyler Drain*

*Joelle Hamm*  
*Justin Welsh*  
*Michael Gebhardt*  
*Perry M. Adair*  
*Charles Floria*  
*Amy Norris*  
*Tom Helbig*  
*Ann Daw*  
*Chris & Cara Chandler*  
*Gregg & Julie Hosfeldt*  
*Todd Roberts*  
*Jordan Buttorff*  
*Yvonne Rivera*  
*Travis Lewallen*  
*Ryan LaPlante*  
*Brian Barakat*  
*Dennis Lewon*  
*Anne Wild*  
*Adam Dippold*  
*Andrew LeCuyer*  
*Mark Beezley*  
*Doug & Donna Fish*  
*John & Cindy Haugen*  
*Meera Patel*  
*Alice Hackney*  
*Benjamin Corrie*  
*Johnathan & Ashley Clark*  
*David Weisberg*  
*Eric & Susan Wiseman*

*Eric Tupler*  
*John Graff*  
*Kevin Hackett*  
*Laura Choe*  
*Morrie Trautman*  
*Chris Ridings*  
*Nathan & Katharine Knarreborg*  
*Patrick & Christine Nolan*  
*Steve Rendle & Family*  
*Scott Schriefer*  
*Steve Hill*  
*Susan Foster*  
*Hoby & Lynn Douglass*  
*Thomas & Brooks Barron*  
*Todd & Pam Spaletto*  
*Benjamin Gettinger*  
*Hale Sostock*  
*Ashley Fortenberry*  
*Rachel Worth*  
*Brian Bass*  
*Florence Sandok*  
*Miguel Mejia*  
*Michael & Marianne Simcic*  
*Sabrina Abbott*  
*Darren Josey & Cara Hogan*  
*Cassie Heppner*



# Foundation Support

Big City Mountaineers grew its portfolio of foundation support by 8% in 2018. Our foundation partners are ensuring our ability to grow and challenging us to innovate.

## 26 FOUNDATIONS



## 5 MULTI-YEAR COMMITMENTS



## \$330,000+ FOUNDATION DONATIONS

Telluray Foundation

Caerus Foundation

Ike and Roz Friedman Foundation

The M.S. Grumbacher Foundation

The Red Wing Shoe Company Foundation

Washington State – No Child Left Inside Fund

Benson Family Foundation

Broe Family Foundation

Adolph Coors Foundation

Dannell-Kay Foundation

George Family Foundation

Peyback Foundation

The Corwin D. Denney Foundation

Youth Philanthropy Fund of The Minneapolis Foundation

The Guardsmen

Mentor Colorado

The Grainger Foundation

Denver Mountain Parks

Clif Bar Family Foundation

Dr. Scholl Foundation

H.B. Fuller

The Cairn Project

The Colorado Trust

The Hubbard Broadcasting Foundation

The Rifkin Foundation

Wobb Family Fund

Trevor Marsh Fund

Rock Canyon High School

HS2 Solutions Charitable Fund

Colorado Health Foundation

Servco Foundation

The Hosanna Foundation Inc

What Would Ward Do Memorial Fund

ORA Reps Campership Fund

Community First Foundation



# Volunteers, Mentors, Instructors, Agency Leads and Youth Leaders

Thank you to the incredible community of volunteer mentors, trip instructors, and youth agency leaders who make our programming come to life in the field. You are building trust and making connections with our students which is so vital to our ability to accomplish our mission.

*Aaron Seemann*

*Adam Long*

*Adeline Fryar*

*Agate Kleinhesselink*

*AJ McGuire*

*Alicia Olness*

*Allison Brown*

*Allyn Krenz*

*Amber Morse*

*Amie Baron*

*Andre Folse*

*Andrea Nelson*

*Andrew Wolff*

*Anna Dupay*

*Anna Gonzalez*

*Anne Hayward*

*Anora Burwell*

*Arleatha Banjoko*

*Arone Andu*

*Arthur Eigenbrot*

*Austin Kmetovic*

*Ben Allison*

*Benjamin Corrie*

*Benjamin Kovco*

*Bernie Johnsen*

*Blair Johnson*

*Bobby Baca*

*Breana Winters*

*Brett Albin*

*Brian Kelly*

*Brittany Bigley*

*Bryan Martin*

*Brynna Bostic*

*Callie Works-Leary*

*Camryn Williams*

*Cari Monroe*

*Carol Amberg*

*Carol Munch*

*Caroline Corsones*

*Chantel Aguilar*

*Chelsea Will*

*Christina Brown*

*Christina Maples*

*Christl Haley*

*Christopher Ball*

*Cindy Smith*

*Cora Williams*

*Dalbert Manrique*

*Dana Matsunami*

*Dane Zehrung*

*DanielJohn (DJ) Schneider*

*Danielle Piscatelli*

*Darla Harrah*

*David Cryar*

*David Hermele*

*David Murray*

*Diana Archuleta*

*Dyna Amaya-Lainez*

*Eli Fry*

*Elizabeth Evans*

*Elizabeth Taylor*

*Ellen Brandon Piatt*

*Ellen Long*

*Ellie Licata*

*Emelie Frojen*

*Emma Becher*

*Enrique Mejia*

*Erica Henderson*

*Erin Margolis*

*Essie Schlotterbeck*

*Gabriel D'Luzansky*

*Gabriella Carrethers*

*Gary Danis*

*Gary Francis*

*Genna Bonfiglio*

*Gerardo Gutierrez*

*Gustavo Goncalves*

*Hannah Hallenbeck*

*Hannah Lewis*

*Heath Haynes*

*Heather Daigle*

*Heather Knight*

*Hector Salamanca Arroyo*

*Helen Sprainer*

*Ian Markovitz*

*Isabella Villacres*

*Ivan Petramala*

*Izear Smith*

*Jacob McCracken*

*Jada Bonner*

*Jada Bonner*

*Janelle Werner*

*Jared Howkins*

*Jason Boyle*

*Jason McEwen*

*Jason Olson*

*Jenne Wiedemeier*

*Jennifer Edgar*

*Jennifer Garcia*



Jennifer Govola  
Jennifer Wiebracht  
Jennifer Wray  
Jenny Thompson  
Jeremy Werlin  
Jessica Lukken  
Jillian Barcelou  
Jimmy Tardy  
Joanne Franklin  
Joel Hawksley  
Joel Sweet  
Joelle Hamm  
John D Eichenour  
John Lehman  
Jordan Evans  
Juan Colonia  
Julia Teitelbaum  
Julie Ballou  
Karen Acosta-Corona  
Kathryn Endresen  
Kayla Stolte  
Kelsey Londo  
Kepler Fontenele  
Khadijah Vigil  
Kieran Lee  
Kjell Moline  
Kristen Kruse  
Kristy Nguyebn  
Kumar Adoni  
Kurtis Heerema  
Kyle Heddy  
Lance Tsosie  
LaShea Smith  
Laura Tracy  
Leila Diab  
Lindsay Tenes  
Lisa Keim  
Lori Abramowitz  
Lori Nicolai  
Luke Vitagliano  
Maddy Lawson  
Madison Wifall  
Maggie Imboden  
Mara Steven  
Marc Venisse

Maria Brickman  
Marisa Richardson  
Mark Travers  
Masaru Torito  
Matthew Goodrid  
Max Kilzer  
Max Marschhausen  
Megan Bell  
Megan Huelman  
Melissa Bartt  
Michael Gardner  
Michael Spekhardt  
Michael White  
Michelle Hobbs  
Michelle Lin  
Michelle Ma  
Mindy Stutzman  
Miron Golfman  
Natacha Kiler  
Natalie Bybee  
Natalie Davies  
Natalie Tupper  
Natasha Ahmed  
Natasha Blayney  
Nathan Silverglate  
Nathan Silverglate  
Neah Baechler  
Neill Goltz  
Nicole Amidei  
Nicole Assumpcao  
Noah Hirshorn  
Olimpia Mejia  
Patricia McDonald  
patrick caldwell  
Pete Hicks  
Philip Taylor  
Rachel Fukaya  
Rachel Voris  
Rachel Voris  
Ray Baltera  
Rebecca Derr  
Robert Macias  
Robyn Dunne  
Robyn Garrison  
Rod Allison

Ronald Andrew Yule  
Ryan Olmsted  
Samuel Bennett  
Samuel Dean  
Scott Hally  
Seth James Farrell  
Shaela Blackmon  
Shaina Frank  
Shannon Oleynik  
Siddeeqah Shabazz  
Spencer Myers  
Stephanie Cote  
Stephenie Stovall  
Steven Nguyen  
Susan Luo  
Suzanne Taylor  
Sydney Bozek  
Tal Atid  
Tanya Weiss  
Taylor Ruffin  
ThanhTu Nguyen  
Thomas Moll  
Tiffany Saria  
Tom Miller  
Tracy Leffingwell  
Travis Stealy  
Trey Richardson  
Tyler Geisen  
Valentino Bailey  
Vashti Pearson  
Vicki Swedeen  
Wayne Adams  
Wesley Hackman  
William Grimes  
Yasameen Sajady  
Zachary Sippel





A QUOTE FROM THE TRIP THAT INSPIRED ME WAS: "DON'T EVER LET ANYONE TELL YOU THAT YOU CANNOT DO SOMETHING!" - Seneca



303.271.9200  
INFO@BIGCITYMOUNTAINEERS.ORG  
WWW.BIGCITYMOUNTAINEERS.ORG  
BIG CITY MOUNTAINEERS  
710 10TH ST. SUITE 120  
GOLDEN, CO 80401

